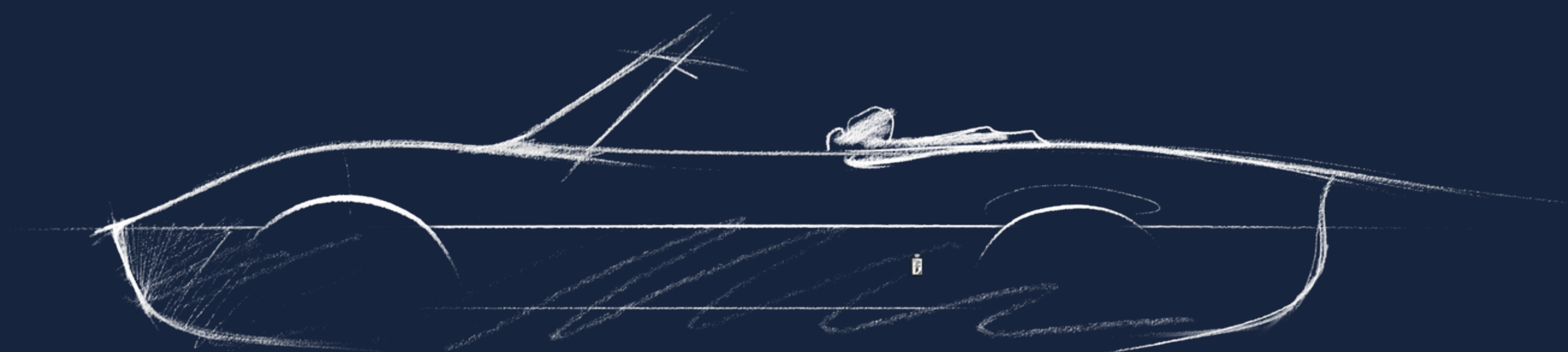




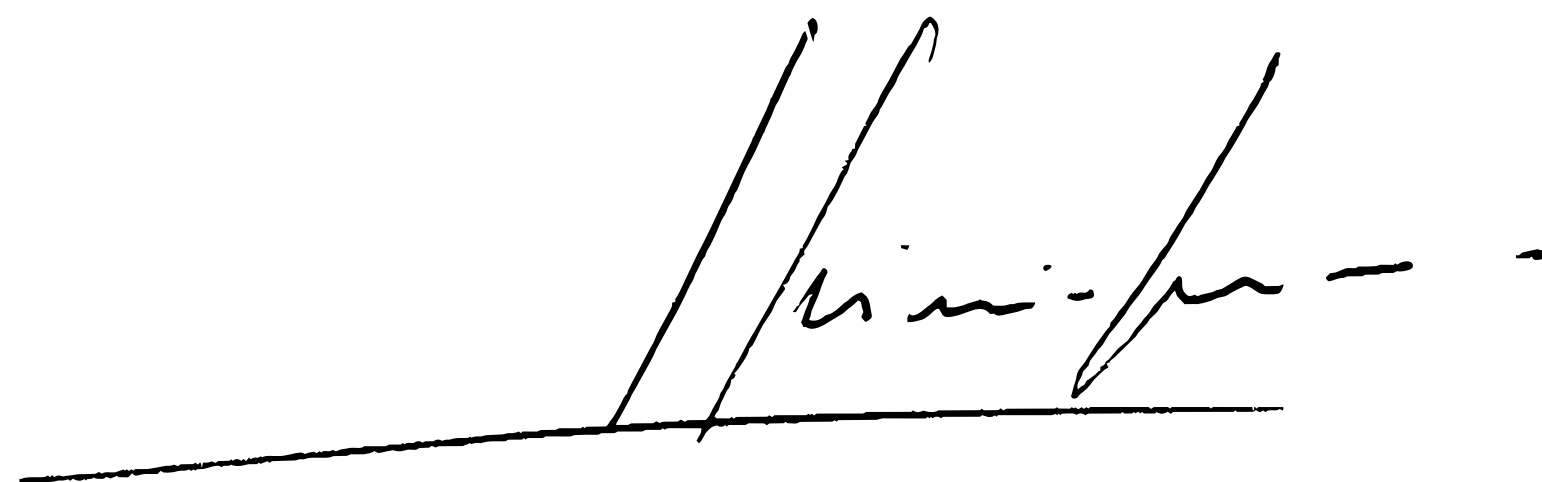
*pierrel*

CLASSICHE



**“It’s essential to  
preserve our heritage  
by making it part of  
our future,”**

Sergio Pininfarina

A stylized, handwritten signature in black ink, appearing to read 'Pininfarina', with a long horizontal line extending from the left.

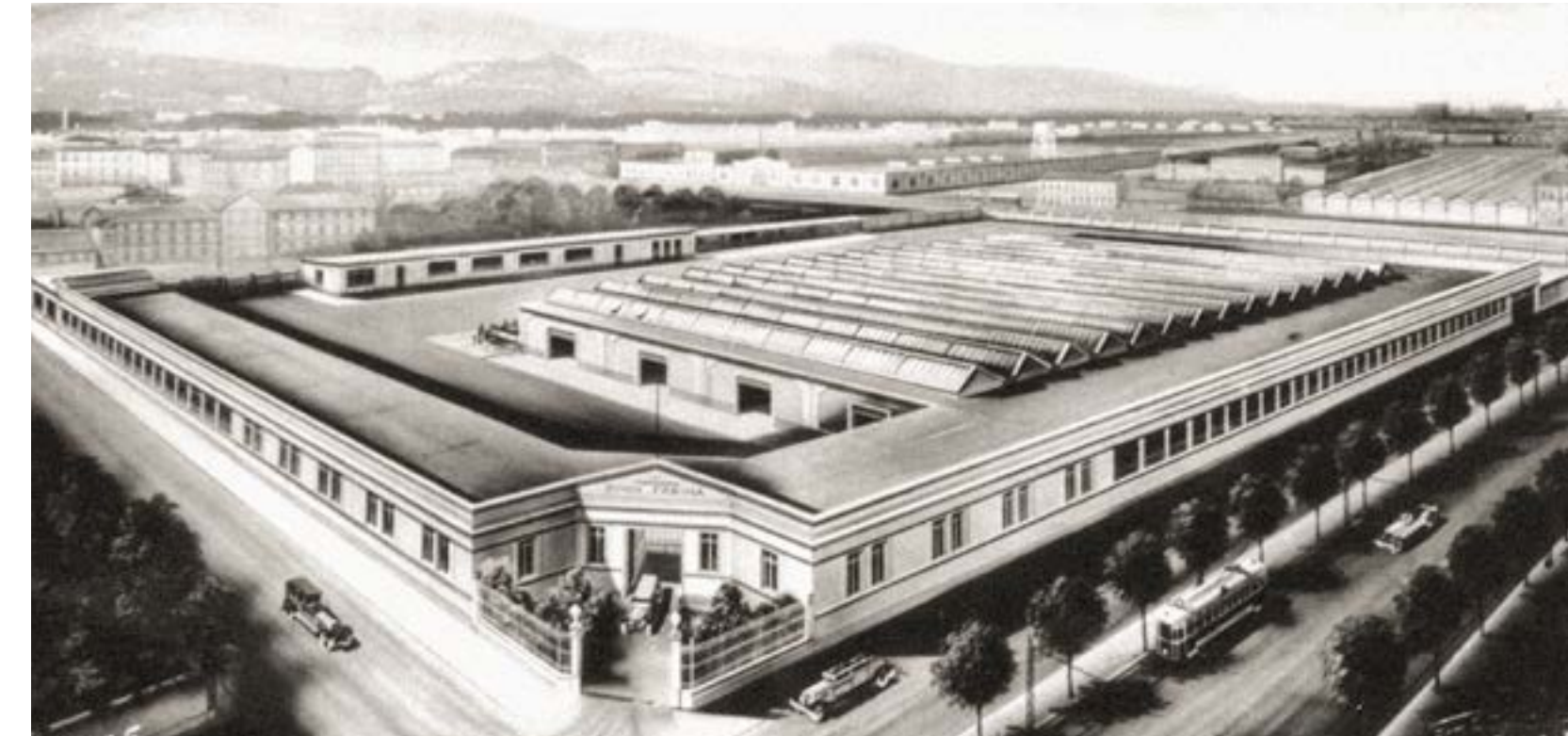


legendary

# How the story began

It started with a dream born in Italy more than nine decades ago by a visionary man Battista Farina, with the desire to create beauty. The story of a singular obsession, an enduring passion, a family tradition, this is the story of Pininfarina where tradition inspires innovation and a visionary style shapes the future.

Since its foundation year in 1930, Pininfarina has designed some of the most iconic cars with their elegant design that has made the history of automotive.





timeless

# An icon of beauty

Pininfarina embodies the values of purity, elegance and innovation. With its timeless design, it has shaped some of the most iconic cars. The Cisitalia, the Lancia Aurelia B24, the most iconic Ferraris represent the history of Pininfarina and made the brand Pininfarina famous across the world, embodying the Italian Style.





priceless

# The Pininfarina heritage

Pininfarina values its past and heritage, which have contributed to the history of the automotive sector.

Our archive, together with the Pininfarina collection, represents Pininfarina's rich historical legacy, offering access to unique materials. The classification of the archive gave birth to Pininfarina Classiche, which aims to certify some of the most iconic cars designed and manufactured by Pininfarina.







# Timeless beauty, now certified

Pininfarina Classiche is a certification program dedicated to classic cars that were crafted in our facilities for various brands throughout the years.





# Pininfarina Classiche for classic cars and youngtimers

The Pininfarina Classiche certification encompasses **classic cars and youngtimers designed and produced by Pininfarina.**

Legendary models from Fiat, Lancia, Peugeot, Alfa Romeo and few more Pininfarina cars are certified through the program.





# Description of the program

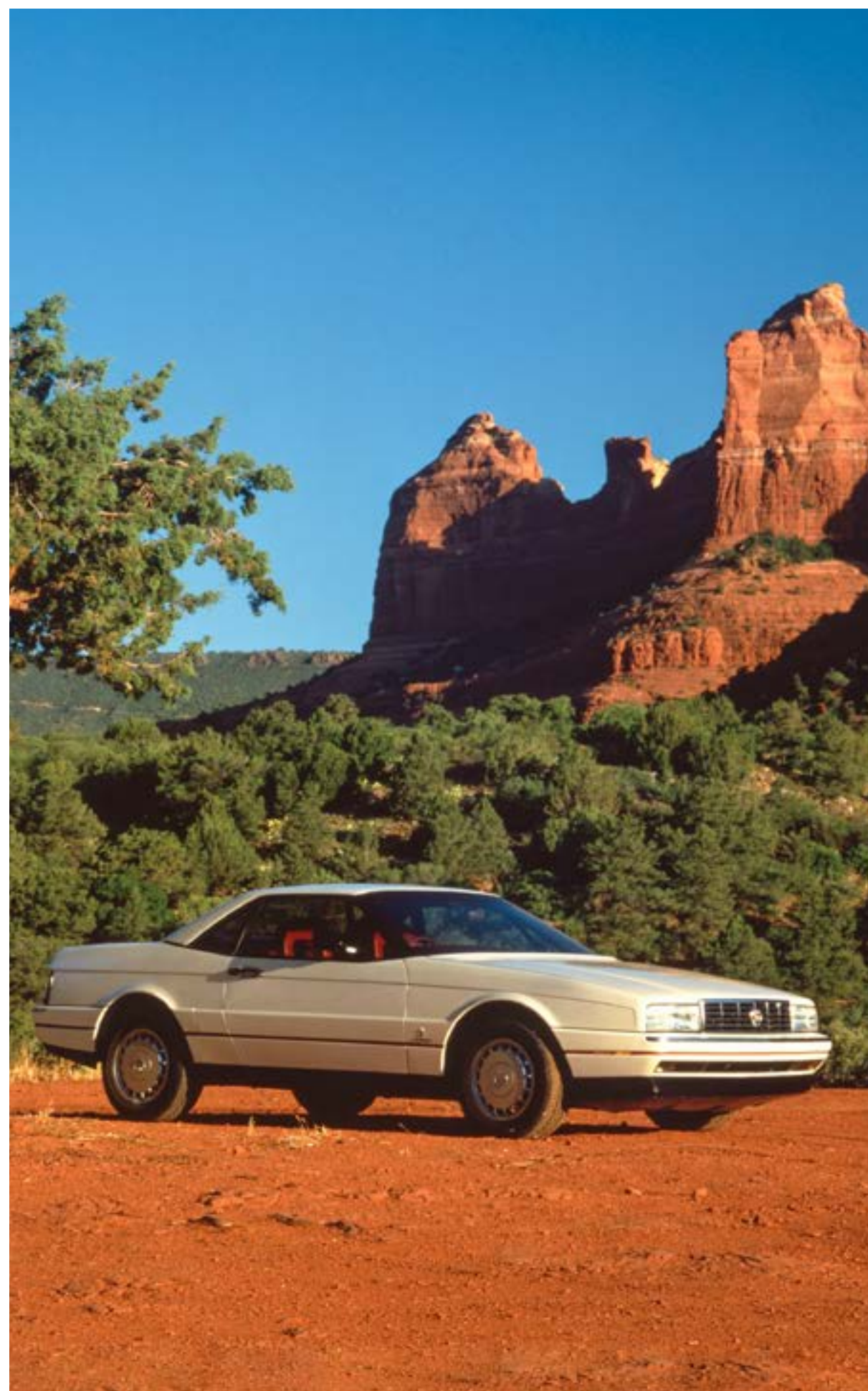
Our new service stems from the initiative to make the Pininfarina historical archive available to car owners and collectors.

The Pininfarina Classiche certification is a declaration related to the following production specifications:

- **chassis number**
- **market of destination**
- **model and type code**
- **exterior color**
- **interior finishing**
- **car mats**
- **date of exit from Pininfarina facilities**
- **other available information** (engine number, body number, soft top, etc.)







Photos from Pininfarina archive





Photos from Pininfarina archive



# How to request the declaration

1. Send an e-mail to [classiche@pininfarina.it](mailto:classiche@pininfarina.it) with the following information about the vehicle: model, chassis number and registration date (if known).  
If possible attach a photocopy of the car's registration documents.
2. Receive confirmation of the presence of the data for the issuance of the declaration in the Pininfarina historical archive (approximately within 2 working days).
3. After data confirmation, Pininfarina will send a form to be filled out by the Customer. The form will also contain the necessary information for payment via bank transfer.
4. Pininfarina will send the digital scan of the declaration via email and send the original by courier within 5 working days after receiving the payment.





# Pininfarina Classiche declaration price list

	vehicles produced after 1980	vehicles produced before 1980
<ul style="list-style-type: none"><li>• Alfa Romeo Spider (Duetto)</li><li>• Fiat 124 Spider</li><li>• Pininfarina Spider Europa and Volumex</li></ul>	€300,00	€400,00
	vehicles produced after 1975	vehicles produced before 1975
<ul style="list-style-type: none"><li>• Peugeot</li><li>• Fiat, all other models</li><li>• Lancia</li><li>• Cadillac Allanté</li></ul>	€400,00	€500,00
Other brands and models, if available in Pininfarina Archive	Quotation on request	

**VALID FROM JANUARY 1<sup>st</sup> TO JUNE 30<sup>th</sup>, 2026;**

**ALL PRICES INCLUDING VAT.**

This price list applies to all markets except those using USD prices.

The listed prices are applicable exclusively to the mentioned carmakers / models. Any inquiries regarding other brands will be assessed on an individual basis.

The price includes shipping costs for declarations sent within Italy.

For all shipments to destinations outside Italy, the price list will be supplemented with courier shipping fees\*.

The following cost ranges are provided as an indication:

Europe: €16 -18

Asia: €20 - 22

Australia: €21 - 23

Other geographical areas: evaluated case by case

*\*the exact amount will be calculated prior to the shipment and included in the total price to be paid*



# Pininfarina Classiche for Ferrari





# Pininfarina Classiche for Ferrari

**Pininfarina Classiche Certification program is also available for Ferrari classic cars strictly in relation to the components designed and produced by Pininfarina.**

The Pininfarina Classiche declaration for Ferrari is related to the following production specifications:

- **bodywork number**
- **configuration type**
- **type code**
- **exterior color**
- **interior finishing**
- **car mats**
- **date of exit from Pininfarina facilities**
- **other available information** (es. soft top, power windows etc.)

Each request for a Pininfarina Classiche declaration for Ferrari cars is treated individually, which may result in a longer processing time.



WE MOVE DREAMS

## DICHIARAZIONE DI SPECIFICHE DI PRODUZIONE

## DECLARATION OF PRODUCTION SPECIFICATIONS

Pininfarina dichiara che dai registri di produzione conservati presso Archivio Storico Pininfarina, la scocca del veicolo ..... risulta prodotta da Pininfarina sul telaio N° ..... fornito da Ferrari nel ....., in relazione esclusivamente ai componenti elencati di seguito unitamente alle rispettive caratteristiche:

Pininfarina declares that from the production records kept in the Pininfarina Historical Archive, the bodywork of the vehicle ..... has been produced by Pininfarina on the chassis N° ..... supplied by Ferrari in ....., in relation strictly to the components listed below together with their respective characteristics:

N° SCOCCA / BODYWORK .....

CODICE TIPO / TYPE CODE .....

TIPO DI ALLESTIMENTO / CONFIGURATION TYPE .....

COLORE ESTERNO / EXTERIOR COLOUR .....

FINIZIONE INTERNI / INTERIOR FINISHING .....

TAPPETI / CAR MATS .....

DATA DI USCITA DAGLI STABILIMENTI  
PININFARINA / DATE OF EXIT  
FROM PININFARINA FACILITIES .....

NOTE / NOTES .....

La presente dichiarazione di specifiche di produzione riguarda esclusivamente i componenti progettati e realizzati da Pininfarina ed esclude tutti i componenti realizzati da Ferrari S.p.A., come il telaio, il motore, il cambio, ecc.

This declaration of production specifications covers strictly components designed and manufactured by Pininfarina, and excludes all parts made by Ferrari S.p.A., such as the chassis, engine, gearbox, etc.

xx.xx.xxxx, Cambiano (TO), Italia

Procuratore / Legal Representative

# Pininfarina Classiche for Ferrari

• Ferrari 250 GT	€5.000,00		
	vehicles produced up to 1965	vehicles produced from 1966-1975	vehicles produced after 1975
• All other Ferrari models, if available in Pininfarina Archive	€3.500,00	€3.000,00	€2.500,00

**VALID FROM JANUARY 1<sup>st</sup> TO JUNE 30<sup>th</sup>, 2026;**  
ALL PRICES INCLUDING VAT.  
This price list applies to all markets except those using USD prices.

The price includes shipping costs for declarations sent within Italy.

For all shipments to destinations outside Italy, the price list will be supplemented with courier shipping fees\*. The following cost ranges are provided as an indication:

Europe: €16 -18  
Asia: €20 - 22  
Australia: €21 - 23  
Other geographical areas: evaluated case by case

\*the exact amount will be calculated prior to the shipment and included in the total price to be paid



If you wish to enrich the historical documentation of  
your Pininfarina car, please contact us to learn more.

[CLASSICHE@PININFARINA.IT](mailto:CLASSICHE@PININFARINA.IT)



Discover more about Pininfarina Classiche

[WWW.PININFARINA.IT/CLASSICHE](http://WWW.PININFARINA.IT/CLASSICHE)